

# SELECT®

## Residential Gas Water Heaters



300/301 Series

State Select® gas water heaters feature an FVIR Compliant design, which meets the ANSI Z21.10.1-CSA 4.1 standards for flammable vapor ignition resistance. Select water heaters are available in a variety of heights which can accommodate installations with limited space.

### Intelligent Control Logic

- The internal microprocessor provides enhanced operating parameters and tighter differentials for precise sensing and faster heating response to optimize performance.

### Self-powered Electronic Gas Valve

- Uses a thermopile to generate the power needed to operate the electronic gas control without requiring an external power source.

### Diagnostics

- The electronic gas control incorporates an LED status indicator that monitors system operation & service diagnostics.

### Diffuser Dip Tube

- Reduces lime and sediment buildup, maximizes hot water output
- Made from State PEXAN™, a cross-linked polymer that can withstand long-term exposure to temperatures up to 400°F

### Green Choice® Gas Burner

- Patented “Eco-Friendly” burner design reduces NOx emissions by up to 33% and complies with 40 ng/j requirements for low NOx emissions.

### Easy-to-Light Piezo Ignitor

- For fast “one-hand” pilot ignition

### Glasslined Tank with Aluminum Anode Rod

- For long-lasting protection against build up and corrosion

### Durable, Brass Tamper-Resistant Drain Valve

### CSA Certified and ASME Rated T&P Relief Valve

### Design-Listed by CSA International

- Certified at 300 PSI test pressure and 150 PSI working pressure
- Listed according to ANSI Z21.10.1 - CSA 4.1 standards governing storage-type water heaters
- Meets the Federal Energy Efficiency Standards effective January 20, 2004, according to the National Appliance Energy Conservation Act (NAECA) of 1992 and meets the thermal efficiency and standby loss requirements of the U.S. Department of Energy and current editions of ASHRAE/IESNA 90.1.
- Additional code compliance: UBC, CEC, SBCC, CABO, HUD and BOCA National Codes

### FVIR Compliant Design

### Simplifies Service

- Uses industry standard thermopile
- Burner operation may be viewed through new enlarged sight glass

### 6-Year Limited Tank and Parts Warranty

Consult written warranty or contact State Water Heaters for complete information



For more information on Select® contact:  
State Water Heaters  
500 Tennessee Waltz Parkway, Ashland City, TN 37015  
800.365.0024 Toll-free USA  
www.statewaterheaters.com

SRGSS02408

Revised April 2013

SOLID.STATE.



# SELECT®

## 300/301 Series

### Residential Gas Water Heaters



MODEL NUMBER	PEAK DEMAND OUTPUT (1st Hour Rating Gallons)	ENERGY FACTOR	GALLON CAPACITY	BTU INPUT PER HOUR NATURAL†	RECOVERY 90°F RISE GALLONS	FOAM THICKNESS (Inches)	DIMENSIONS IN INCHES							APPROX SHIPPING WEIGHT (LBS)
							A	B	C	D	E	F	DRAFT HOOD OUTLET	
<b>TALL MODELS</b>														
GS6 30 YORT	67	.61	30	35,500	36	1	61-1/2	58	16	13	8	52	3 or 4	112
GS6 40 YBRT	70	.59	40	40,000	41	1	61-3/4	58-1/4	18	13	8	51-3/4	3 or 4	138
GS6 50 YBRT	88	.58	50	40,000	41	1	60-3/4	57	20	13	8	50-1/4	3 or 4	153
<b>SHORT MODELS</b>														
GS6 30 YORS	60	.61	30	35,500	36	1	50	46-3/8	18	13-1/2	8	40	3 or 4	113
GS6 40 YBRS	66	.59	40	40,000	41	1	51-1/2	47-3/4	20	13	8	41	3 or 4	135
GS6 50 YBRS	93	.61	50	40,000	41	2	53-1/4	49-1/2	24	13-1/4	8	42-1/2	3 or 4	175

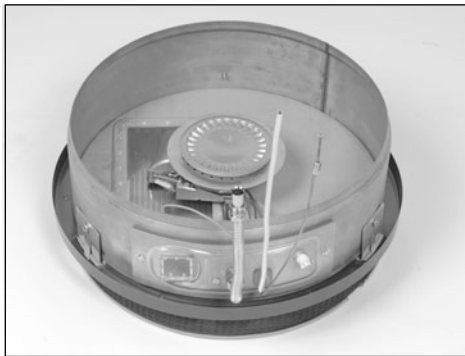
Recoveries are rounded to nearest gallon.  
 Water Connections - 3/4" male on all models.  
 External heat trap nipples are factory-installed on all models.  
 † Propane Gas - 40,000 for 50-gallon short, 37,000 for the 50-gallon tall,  
 36,000 input for 40-gallon models and 32,000 for 30-gallon models.

For 10-Year Tank and 6-Year Parts Warranty, change "6" to "X" in Model Number (GSX 40 YBRT).  
 When ordering Propane, change "Y" to "H" in model number (GS6 40 HBRT).  
 When ordering top-mounted T&P Valve, add "G" to model number (GS6 40 YBRT G).  
 Propane (LP) models are Series 201

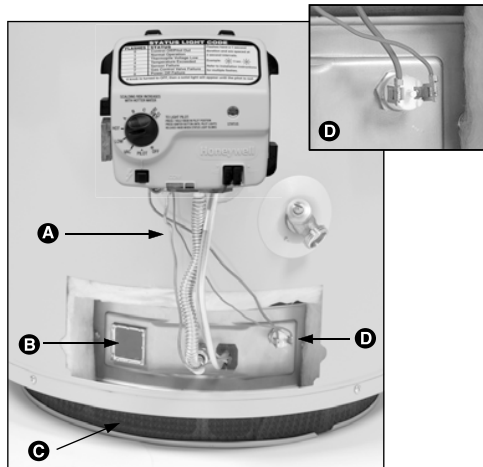
## Flammable Vapor Ignition Resistant (FVIR) Water Heaters

State FVIR design meets the American National Standards Institute standards (ANSI Z21.10.1 - CSA 4.1) that deal with the accidental or unintended ignition of flammable vapors, such as those emitted by gasoline.

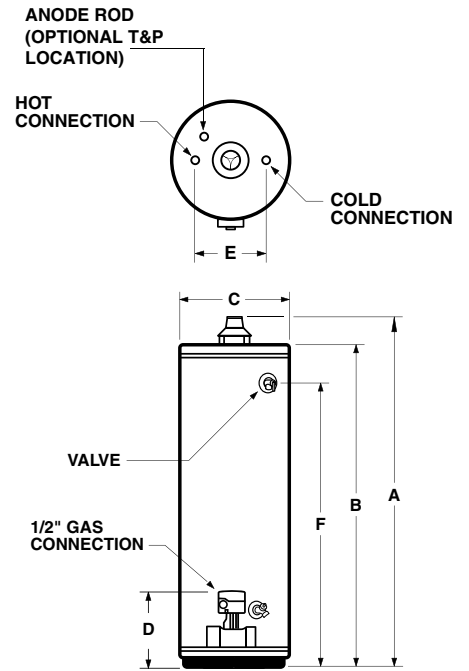
Feature a sealed combustion chamber with air intake filter and a flame arrestor built into the water heater base. In addition, a thermal cutoff (TCO) device, is designed to shut off gas flow to the burner and pilot if poor combustion is detected.



If flammable vapors accidentally enter the combustion chamber, the arrestor is designed so flames burn off the top surface and can not escape down through the arrestor.



- A. Industry standard thermopile
- B. Large View Port for easy burner inspection
- C. 360° combustion air filter
- D. Thermal Cutoff (TCO) with manual reset



For complete information on limited warranties, consult written warranty, or contact the State Customer Care Center, 1-800-365-0024.

State Industries, Inc. reserves the right to make product changes or improvements without prior notice.

Maximum Hydrostatic Working Pressure: 150 PSI.

For more information on Select® contact:  
 State Water Heaters  
 500 Tennessee Waltz Parkway, Ashland City, TN 37015  
**800.365.0024 Toll-free USA**  
[www.statewaterheaters.com](http://www.statewaterheaters.com)

**SOLID.STATE.**

