

CG-D Series



Efficient Gas-Fired Water Boiler

**Fully updated for
DOE 2012 compliance!**

- **Up to 84% AFUE**
- **31 to 244 MBH**
 - In 9 sizes
- **Chimney vented**
- **Integrated boiler control**
 - User-friendly
 - Energy-saving “thermal purge” feature circulates residual warm water in heating system prior to firing boiler
 - Combination high limit circulator relay
 - Extensively tested & proven
- **Natural or LP gas**
- **Cast iron heat exchanger**
 - Meets the ASME Boiler and Pressure Vessel Code
- **Metal section connectors**
 - Resist chemicals, increases the life of the boiler
- **Step-opening gas valve**
 - Provides smooth & quiet start-up
- **Lifetime limited warranty**
 - See your installing contractor for more warranty information



New Yorker[®]
RESIDENTIAL HEATING BOILERS

MADE IN

U . S . A .

Ratings & Specifications

Model	Input Gas (MBH)	AHRI Heating Capacity (MBH)	Net IBR Water (MBH)	AFUE% Electronic Ignition
CG20D	37.5	31	27	82.3
CG30D	62	52	45	82.6
CG40D	96	80	70	82.3
CG50D	130	108	94	82.0
CG60D	164	135	117	82.0
CG70D	198	163	141	82.0
CG80D	232	191	166	82.0
CG90D	266	219	190	82.0
CG100D	299	246	214	82.0
High Efficiency Models				
CG30DH	62	52	45	84.0
CG40DH	96	80	70	84.0
CG50DH	130	108	94	84.0
CG60DH	164	136	118	84.0



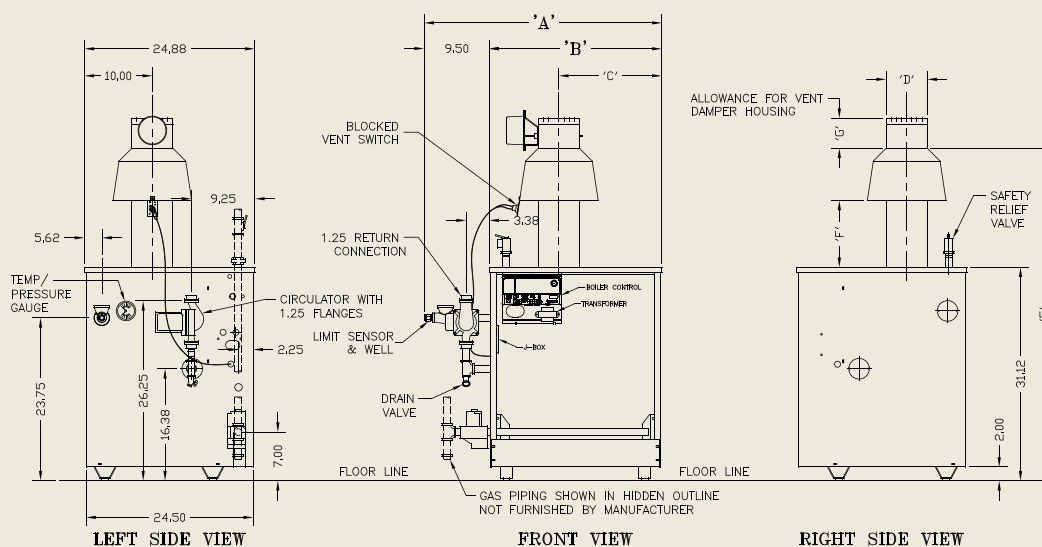
Standard Features

- Fully packaged
- Integrated boiler control system
- Taco 007 circulator
- Honeywell gas valve
- Drafthood
- Flame roll-out switch
- Blocked vent switch
- Vent damper
- Drain valve



Model	Dimensions (inches)							Vent Size Diameter (in.)	Gas Connection	Water Content (gal.)	Approx. Ship Wt. (lbs.)
	A	B	C	D	E	F	G				
CG20D	20-1/4	10-3/4	6-3/8	4	45-5/8	8-1/2	10 (1)	4	1/2	2.5	212
CG30D	21-1/2	12	6	4	45-3/4	8-1/2	4-3/4	4	1/2	3.2	254
CG40D	24-3/4	15-1/4	7-5/8	5	47-1/8	9-1/8	4-3/4	5	1/2	4.0	298
CG50D	28	18-1/2	9-1/4	6	48-1/2	9-3/4	5-1/4	6	1/2	4.7	346
CG60D	31-1/4	21-3/4	10-7/8	6	48-1/2	9-3/4	5-1/4	6	1/2	5.5	408
CG70D	34-1/2	25	12-1/2	7	50-1/8	10-3/8	6-5/8	7	3/4	6.2	450
CG80D	37-3/4	28-1/4	14-1/8	7	50-1/8	10-3/8	6-5/8	7	3/4	7.0	506
CG90D	41	31-1/2	15-3/4	8	52	11	7-1/4	8	3/4	7.7	550
CG100D	44-1/4	34-3/4	17-3/8	8	52	11	7-1/4	8	3/4	8.5	608

Refer to the National Fuel Gas Code for equivalent areas of circular and rectangular flue linings.
 Maximum allowable working pressure, water – 50 PSI
 Safety relief valve pressure, water – 30 PSI shipped from factory (std.)
 15' minimum chimney height



©2012 New Yorker Boiler Company, Inc., Hatfield, PA
 (215) 855-8055
 www.newyorkerboiler.com
 PL81420101003-9/12-5Ms

